

Packing the sky Hook into the Vortex container Sport and Military systems

Note!!!!!!

Packing the reserve into the free bag doesn't change, only an extra sky hook sub flap, sky hook on the reserve bridle and lanyard on the container are installed.

Before packing the reserve fit the skyhook lanyard onto the container by matching up the Velcro on the right shoulder clean the cutaway cables and install into the rig make sure that the left cutaway cable is routed through the yellow loop on the Collins lanyard and into the corresponding hard housing. By doing this first makes the cutaway cable installation easier on the smaller size containers.



Figure 1



Figure 2

Make s folds on the bridle from the top edge of the free bag till +- 20mm away from the grommet of the free bag. (Fig 1)

S fold the bridle till +- 15cm from the stow loop of the sky hook. (Fig 2)



Figure 3

Close the sky hook sub flap and insert temporally packing pin. (Fig 3)



Figure 4

Insert the green tab located on the bridle under the sky hook, into the green pocket on the sky hook sub flap. This is to hold the skyhook in place. (Fig 4)



Figure 5



Figure 6

Place the red line loop onto the sky hook (Fig 5) and seal with 1 turn riggers thread going through the holes on the 2 pieces of plastic on the sky hook. Secure the safety tie with a surgeons knot (Locking knot) (Fig 6)



Figure 7

Fold the red line and slide into the red pouch. Make sure that the fold is as close as possible to the sky hook. (Fig 7)



Figure 8

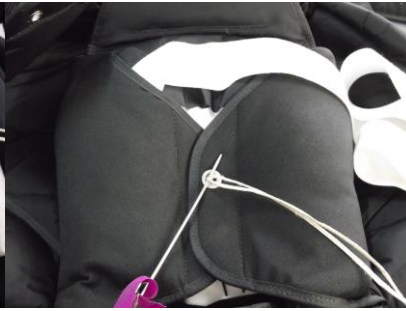


Figure 9

Turn the bridle up wards (Fig 8) and with out disturbing the sky hook close the right and left hand flaps as normal packing. Inspect the skyhook and ensure it has remained in place and that the red skyhook lanyard and the seal thread tacking is secure. (Fig 9)



Figure 10

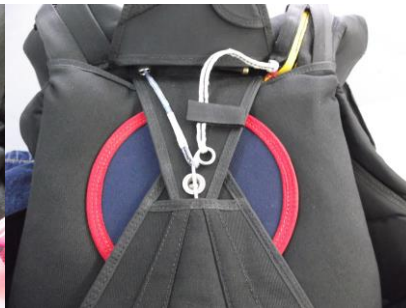


Figure 11

Close bottom flap normally, before closing the top flap fold the excess of the red line under the flap and close. (Fig 10) Insert reserve pin. Match the Velcro on the pin line to the container Velcro on top flap and cover. (Fig 11)

NB!! Make sure that the reserve pin is put through the blue line ripcord or through the eye on the cable ripcord. (Fig 11)

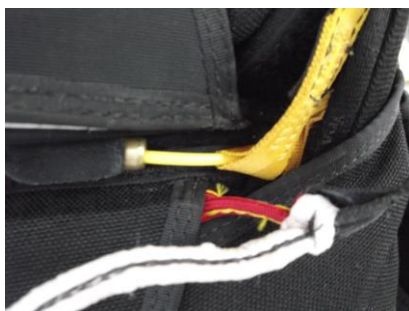


Figure 12

“NB” When routing the cut away handle cable make sure it is routed through the yellow lanyard only. (Fig 12)